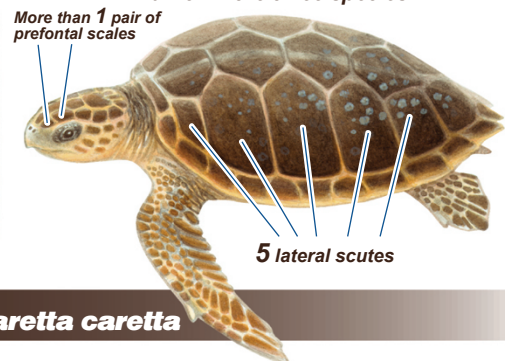




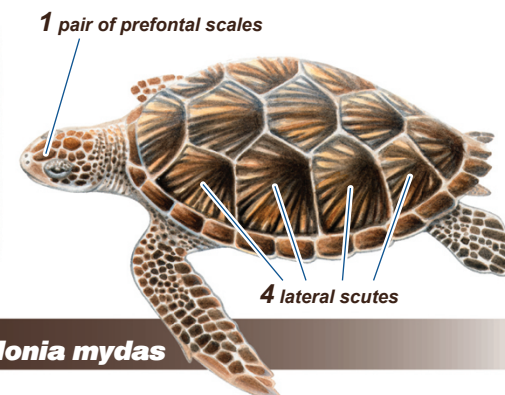
PICTURE GUIDE TO SEA TURTLES OF GLOVER'S REEF ATOLL



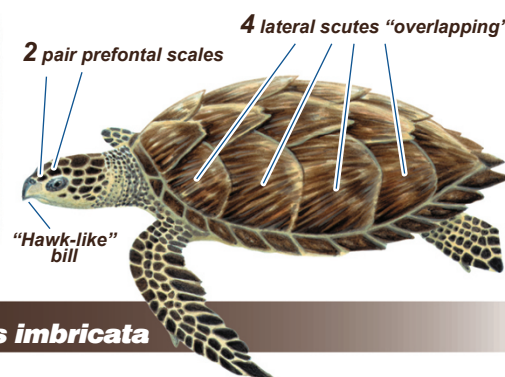
Patterns of scales and scutes on head and back differ in the three species



LOGGERHEAD SEA TURTLE *Caretta caretta*



GREEN SEA TURTLE *Chelonia mydas*



HAWKSBILL SEA TURTLE *Eretmochelys imbricata*

For detailed species descriptions and information on habitat, life history, economic significance and distribution, go to
 "A Field Guide to Reptiles & Amphibians of Eastern & Central North America"
 by Roger Conant & Joseph T. Collins (Peterson Field Guide)
 or the web site <http://www.sefsc.noaa.gov/PDFdocs/species.pdf>

Wikimedia Commons images by U.S. National Park Service, Strobilomyces (ST), David L. Jones (DJ), Daniel Schwen (DS), Didactohedron (DN), Manuel Heinrich (MH), Tom Doeppner (TD), Ecocentrik Guy (EG) and Fins (FI) used under the Creative Commons Attribution ShareAlike 3.0 Unported and 2.5 Generic licenses <http://commons.wikimedia.org/wiki/COM:CC-BY-SA> and the GNU Free Documentation License Version 1.2 or later versions http://commons.wikimedia.org/wiki/Commons:GNU_Free_Documentation_License

This guide may be duplicated *without modification* for educational purposes in compliance with the above licenses.
 Illustrations copyright Garth Mix.

This Guide was created for WCS by biologist and former Glover's Reef Research Station Manager Dr. Tom Bright
 Illustrations and Graphic design by Garth Mix www.gmixdesigns.com

Tom Bright

WILDLIFE CONSERVATION SOCIETY
Glover's Reef Research Station Belize

